



Web-based Software Solutions

Cloud or Server-based platforms

Financial Management

- **General Ledger**
- **Accounts Payable**
- **Accounts Receivable**
- **Payroll**
- **Project Costing ***

Features :

- Multi-Currency/Company
- Budgeting
- Fixed Assets
- Sale Tax Reconciliation
- Consolidated Financial statements
- Location/Division Reporting
- Currency conversion on Financial statements

Supply Chain Management

- **Order Entry**
- **Invoicing**
- **Purchasing**
- **Inventory Control**
- **EDI ***
- **BOM/Production***
- **Warehouse Management***
- **Point-of-Sale***

Features :

- Multi Warehouse Locations
- Allow for Drop Shipments
- Back Order Tracking
- Automatic Inventory Replenishment
- Quote to Order to Invoice
- Customizable Dashboards
- Credit Card Integration
- Lot, Serial and Expiration Product Control
- Complete EDI Fulfillments

** Optional, not included in base System*

RSA eBusiness Solutions[©] uses a proprietary design to provide you with all the advantages of the Internet yet gives you the added control over your data and its security.

RSA is a complete turnkey solution, where we take care of the hardware and software configuration. Find a power outlet, plug in a network cable, point to a web browser and you are up and running with minimal IT resources.

Want to start with something a little smaller while leaving the upgrade option open. Sign-up for our RSA-ON-DEMAND, a cloud-based application that has the same features as its bigger brother.

RSA becomes your **ONE** data and software source for all your Financials and Supply Chain Management. No more messy integration between multiple IT systems.

- Bilingual user screens.
- Easy to integrate with other applications, using standard Excel[®] import/exports
- Ability to manage multiple global/branch locations
- Full real-time financial management
- Anytime, Secure access to your information anywhere there is an Internet connection
- Available as either a hosted or onsite solution
- Website/ecommerce integration
- Reduced ownership costs (no work stations to upgrade)

RSA is built on a core of "open-source" "LAMP" (Linux, Apache, MySQL, Php) technology that powers many of the most successful websites on the Internet today.

RSA sits behind your secure firewall. No more worries about data integrity or who is hosting or viewing your data. You have the control and the peace of mind that your data is in good hands - yours. Allow staff to securely access data anywhere there is an Internet connection.

RSA Software (174386 Canada Inc) is a company with a 20 year history of developing Enterprise class business solutions.



Web-based Software Solutions

Cloud or Server-based platforms

Key Features

<p>Document Imaging</p>	<ul style="list-style-type: none"> • RSA supports a no paper environment • Scan documents directly to Quotes, Sales Orders, Purchase orders and Invoices • No longer lose valuable time searching for a piece of paper
<p>Streamlined Data Entry</p>	<ul style="list-style-type: none"> • Enter data once and access it anywhere, anytime • All information is automatically updated right down to the financial level • Drill down and view original transaction documents
<p>Reporting Analysis</p>	<ul style="list-style-type: none"> • Customize over 100 available business reports • Analyze customers, groups, vendors, products, sales departments, product categories, territories, sales reps and more • Export data directly to Excel®
<p>Integrated Business Solution</p>	<ul style="list-style-type: none"> • Complete business process from quotes to orders to invoices to Accounts Receivable to General Ledger • Real-time financial and inventory updates
<p>Revenue Recognition</p>	<ul style="list-style-type: none"> • Group sales by specific business units and currency • Properly reverse sales for credits and refunds • Track revenue down to the product level
<p>Customization</p>	<ul style="list-style-type: none"> • Import data directly into RSA • Screens based on user's language • Documents based on customer's and vendor's language
<p>Improved Cash Flow</p>	<ul style="list-style-type: none"> • Monitor unpaid invoices and email reminders • Refund overpayments or apply amount to future invoices • Track and record all collection efforts
<p>Expandability</p>	<ul style="list-style-type: none"> • Multiple companies, currencies, locations and warehouses • Lot control, product expiration and serialized inventory • EDI processing and fulfillments
<p>Internal Security Controls</p>	<ul style="list-style-type: none"> • Control users with a group based access levels • Set user-defined access to modules, procedures and record information • Track all transactional edits



Web-based Software Solutions

Cloud or Server-based platforms

Customer Maintenance

Provides access to all customer information, including A/R Aging, Quotes, Sales Orders, Invoices, Products ordered and sold, A/R Adjustments, Payments Received, Special Discount Pricing and Customer Relationship/Collection Comments.

Additional Features

- Customer currency and Sales tax configuration
- Keep back orders determined at customer level
- Multiple contacts per customer
- Credit control with limits, finance charges and credit hold
- Customer preference for printed or emailed documents
- Separate Sales Manager, Sales Rep and Customer service agent per customer
- Accounts can be flagged as a Lead or inactive
- Multiple ship to locations per customer
- Route management with routing priority
- Pricing and discounts by customer, product group or individual product
- Individual customer pricing matrix
- All documents printed in language of customer

The screenshot shows a web browser window titled "Customers [00-101] - C2 SOLUTIONS - Windows Internet Explorer". The address bar shows the URL: https://www.rsaaaccounting.com/accounting/customers.php?record_status=1&record_no=00-101. The browser tabs include "RSA eBUSINESS SOLUTIONS", "Menu - C2 SOLUTIONS", "Customers - C2 SOLUTIONS", and "Customers [00-101] - C2 ...".

The main content area is titled "Customers - Modify" and contains a form for editing customer information. The form is divided into several sections:

- Account Balance:** A dropdown menu.
- General Information:** Number (00-101), Sort Name (BOIS-FRANC), Lead (checkbox), Active (checkbox), Language (English), City (MONTREAL), State/Province (QC ~ QUÉBEC), Zip/Postal (K0K1A0), Country (CA ~ CANADA), Telephone (1: 514-883-8373, 2:, 3:), Fax (514-902-2025), Head Office ID.
- Navigation Tabs:** GENERAL, SALES REP, TAX, BANKING, CONTACT, NOTES, EMAIL.
- Configuration Options:** Currency (CAD), Group (DEFAULT ~ DEFAULT), Pricing (DEFAULT ~ ALL CUSTOMERS), Freight (DEFAULT ~ FREIGHT CHARGES), Discount (DEFAULT ~ DISCOUNTS), E.F.T. (No), Restricted Acct. (No), Finance Charges (No), Prepare Statements (Yes), On Credit Hold (No), Keep BO's (Yes), Available On Web (No), Ordering Priority (1), Credit Limit (0), Dept. No., DUNNS No., Account No., Min. Order Value (0.00), Terms (NET30 ~ NET 30), Sales (44110 ~ SALES), CostCtr (DEFAULT ~ DEFAULT), Ship To (None).

The status bar at the bottom shows "Done", "Trusted sites", and "100%".



Web-based Software Solutions

Cloud or Server-based platforms

Vendor Maintenance

Provides access to all vendor information, including A/P Aging, Check issued, Purchase Orders, Products purchased, Accounts Payable, Invoices, A/P Adjustments, Payments and Comments.

Additional Features

- Vendor currency and Sales tax configuration.
- Multiple contacts per vendor.
- Vendor currency and Sales tax configuration
- Setup GL account for default expense posting
- Preferred delivery warehouse per vendor
- Separate remit to address
- Configure vendor to be paid by check or EFT
- Separate supplier and manufacturer for each product
- Preferred shipping selection per vendor
- Store vendor bank account info for direct payments

Vendors [1000] - C2 SOLUTIONS - Windows Internet Explorer

https://www.rsaccounting.com/accounting/vendors.php?record_no=1000&record_status=1

Select...

Number: 1000 Sort Name: ABC Active:

Name: LES DISTRIBUTION ABC INC. Language: French

Address #1: 5685 FULLUM City: MONTRÉAL

Address #2: BUREAU 103 State/Province: QC ~ QUÉBEC

Address #3: Zip/Postal: H2G2H6

Web Site: www.abc.ca Country: CA ~ CANADA

Telephone: 514-277-1231 Fax: 514-277-1429

Comments: Buying Group ID:

GENERAL TAX BANKING CONTACT

Currency: CAD Keep BO's: Yes

Bank: CIBC Restricted Acct.: No Credit Limit: 2000

Group: DEFAULT ~ DEFAULT E.F.T.: No Account no.:

Discount: DEFAULT ~ DISCOUNTS Warehouse: MTL ~ MONTREAL

Freight: DEFAULT ~ FREIGHT CHARGES Expense: 55105 ~ PURCHASES \$CDN

Duty: DEFAULT ~ DUTY ON IMPORTS CostCtr: 1000 ~ PRINTING

Brokerage: DEFAULT ~ BROKERAGE Terms: NET30 ~ NET 30

Ship Via: DEFAULT ~ DEFAULT



Web-based Software Solutions

Cloud or Server-based platforms

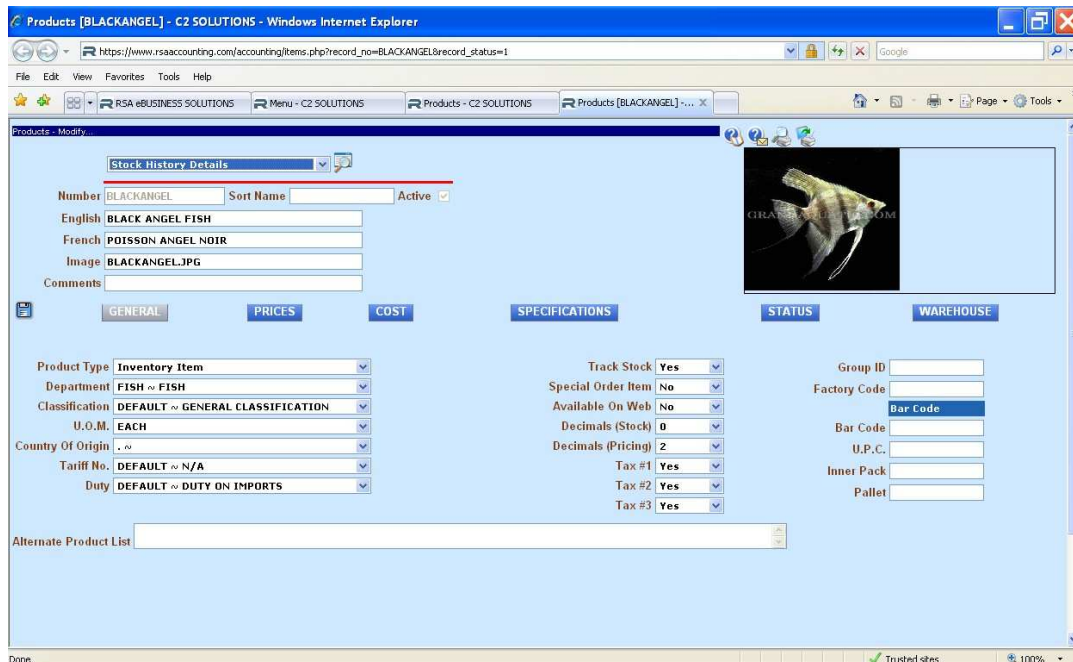
Product Maintenance

Provides access to all product information that is crucial for proper real-time inventory control, including On-Hand Summary/Details (by location/bin/lot/serial), Stock Transfers, Sales Orders, Purchase Order and Invoices (detailed and summarized).

RSA can manage many different product types, which include : Inventory products, Non-stock items, Special order items, Lot numbers, Lot numbers with Expiration, Serial Numbers, Services, Raw Materials, Labor, Rebates, Kits made for Stock, Kits Made to Order, Office Supplies.

Additional Features

- Search by product number, UPC or internal barcode
- Create physical count snapshot with ability to import counted stock and serial numbers from handheld devices or Excel®
- Costing using average or last landed cost
- Landed costs can be updated days, weeks after receiving and calculate duties and currency exchange. Multiple product language descriptions
- Flag products as "web available"
- Attach image to website and product file
- Track all products movement between locations/bins
- Alternative vendors and product number
- Purchase and sell in different units of measure.
- Special discount pricing and Customer Price Break levels





Web-based Software Solutions

Cloud or Server-based platforms

Financials

- Determine the currency of your chart of accounts and print financial statements in the converted currency of your choice.
- Consolidate financial statements between selected companies.
- Ability to print financials for separate locations/division, based on account number segment.
- Month-end balancing routine, helps look for discrepancies between ledger and journals.
- General Ledger is updated in real-time, NO month-end or batch processing required.
- Create regular, recurring and reversing journal entries.
- General Ledger period 13, reserved for year-end accountant's entries.

Additional Features

- Multi-currency, Unlimited number of banks
- Fixed Assets
- Up to two financial years open at one-time
- Sales Tax and Bank Reconciliation
- Import journal entries/budgets from Excel®

Receivables

- Fast "Excel® import" allows you to apply payments from large customers.
- Apply payments automatically to invoices (oldest first, taking into account applicable discounts)
- Separate ship-to and head office A/R account, allows you to receive head office payments.
- Add NSF charge to accounts when posting returned payments.
- Support for credit card payments on customer accounts.

Additional Features

- Print/Mail or Email invoices and statements
- Accept advance payments and deposits
- Calculate and apply discounts and finance charges
- Create custom A/R terms and aging periods
- Cannot delete or invoice bills, once they have been paid
- Lockdown period so that NO entries can be added or modified

Payables

- Payment methods include manually written checks, printed checks and EFT.
- Process invoices in batch mode with management approval, based on due date and discounts.
- Make vendor disbursements without an invoice.
- Apply payments automatically taking into account all applicable discounts.
- Credit card payment input allows for breakdown of expenses and sales tax credits.

Additional Features

- Vendor pre-payments/deposit checks
- Payments types include full or partial payments
- Create custom A/P terms and aging periods
- Cannot delete or edit bills, once they have been paid
- Lockdown period so that NO entries can be added or modified
- Place bills on payment hold until resolved



Web-based Software Solutions

Cloud or Server-based platforms

Order Entry

- A seamless supply chain from issuing quotes, creating purchase order, receiving products into your warehouse, to invoicing your customers, ensuring accuracy while reducing errors due to data re-entry.
- Select ship-to-addresses from customer' list, another customer or an address as entered.
- Create customized order status to insure that every internal step is completed in the order process (Quote, Approval, Credit Check, Purchasing, Receiving, Shipping, Invoicing)
- You can create virtually any pricing structure, from simple fixed prices to complex Chain Store pricing schedules.
- Capture and verify Lot, Expiration or Serial numbers at time of order picking, using a computer or handheld device.
- Create picking lists based on physical warehouse layout. Assign picking lists, view pick status and place orders on hold using Warehouse Management Module. Picking can also be done using handheld devices in a paperless environment.
- Create customized buyer's product and price list with for quick telephone order entry, ability to reload order from previous week.
- Define prices and discounts for individual customer or groups, enable discounts or sale pricing by time periods, specific products or entire product groups.

Additional Features

- Print/Mail or E-mail Quotes and Order Confirmations
- Sales tax calculation based on ship to address
- Multiple ship to dates per product line
- Print picking/packing documents
- Keep or drop backorders is customer and order based

Purchasing

- Send your supplier's RFQ (Request for Quotation) which when processed, can be automatically flagged for approval and converted to a Purchase Order, reducing errors due to data re-entry.
- Purchase Orders can be created manually, from pre-approved RFQ or automatically when product reorder points have been reached.
- Receive Purchase Orders as complete or as part of a partial shipment. Lot numbers, expiration dates and serial numbers can be recorded on a computer or handheld devices.
- Ability to link inventory from multiple warehouses, sales and administrative locations, with only a secure Internet connection.
- For importers, enter transport and brokerage in a multiple of currencies as well as duties on a per line basis to determine a true landed cost, days or weeks after the receipt of the goods.

Additional Features

- Allow for Drop and Blind Shipments
- Alternate vendors and product numbers
- Back Order Tracking
- Automatic replenishment of Inventory
- Print/Mail or E-mail Purchase Orders
- Add digital signatures to your Purchase Orders



Web-based Software Solutions

Cloud or Server-based platforms

Payroll

The Payroll module provides a complete integrated solution for managing all your payroll needs and reporting requirements. You'll never need to re-enter payroll data, saving time and minimizing the chance of data entry errors.

- Calculate Earnings, Withholdings, Deductions, Company contributions and Federal and Provincials taxes automatically - all tax table updates are included.
- An unlimited number of earnings can be setup to handle *Benefits, Hourly, Overtime, Bonus, Salary, Vacation* and *Other* - you determine how each is taxed.
- An unlimited number of deductions can be setup to handle *Income Tax* (Federal, Quebec), *Withholding* (QPP, CPP, EI, QPIP, etc) and Deductions (Group insurance, Union dues, Alimony, etc).
- Print paychecks or stubs or pay your employees with direct deposit.
- Prepare, print and file T4/Releve 1 forms for your employees and all levels of government at year end.
- Each employee is assigned to a payroll department which allows you to expense (Salaries, Hourly, Overtime, Vacation, Bonus and Other) to individual General Ledger accounts.
- Calculates Québec construction union deductions.
- Every employee has their own vacation rate, which can be added to each pay, accrued or calculated annually.
- Employees can be setup for weekly, biweekly, semi-monthly and monthly pay periods.
- Deductions can be setup with an override amount per pay or an added additional value.
- View unlimited detailed and summarized historical earning/deduction history on screen.
- Ability to enter amount and rate for non payroll amounts (example : 100 KM x 0.45 per KM)
- Ability to enter separate hourly shift premiums.
- Enter payroll hours by individual departments or import hours worked directly from Excel®.
- Prepare payroll for employees in multiple provinces while preparing all payroll remittance reports for all levels of government - saving time and tedious paperwork.
- Ability to enter payroll adjustments without having to create a payroll check.
- Save time and minimize data entry, thanks to complete integration with the General ledger, which is updated automatically with each individual payroll check (great for bank reconciliation) but summarized Accounts Payable and Expense journal entries.
- Print Time Cards labels by Department or integrate with a data-entry time-keeping system.