



## Web-based Software Solutions

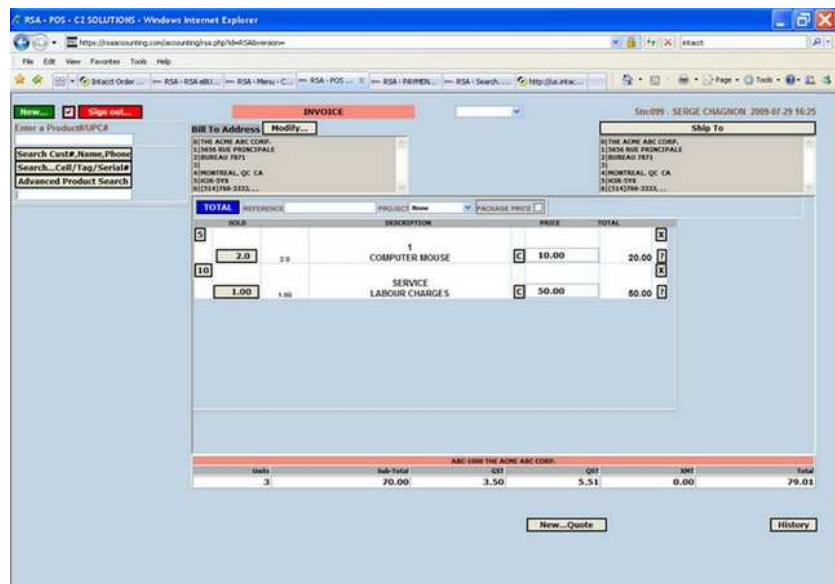
Cloud or Server-based platforms

### Point-Of-Sale

- Quickly handle special orders, Layaways, Work orders, Customer Deposits and Refunds, On Account Payments, Store Credits and more.
- Available Product types are Stock, Serialized, Service, Non-Stock or Kits. Real time On-Hand information allows you to check to see if you have an item in stock, promised to another customer or en route from a supplier. Scan products by SKU or UPC or lookup by name, vendor, manufacturer, vendor part number or fuzzy logic.
- Keep track of all your customers, their Purchase and Product history, Special Orders, Layaways, and Store Credits. Lookup customer by Name, Home or Work phone, address or fuzzy logic.
- Receive purchase orders using a scanner for serial number input.
- Multiple language interface, sales rep work in English/French and documents are printed/emailed in the language of the customer.
- Physical count allows you to take a snapshot of inventory on a given day and import counted stock and serial numbers from handheld devices or Excel®.
- Get a true financial picture on a daily basis. Daily sales cash log (with closeout) processes and updates all daily sales to A/R and General Ledger
- Print or Email (PDF format) multiple copies of all Quotes, Layaways, Invoice and Customer statements on preprinted forms or plain paper.
- SKU numbers can be linked to messages or other product which will automatically be called up (i.e. warranty refusal, cables, etc)
- Check inventory, sales and reports anywhere there is an Internet connection.

### Additional Features

- Easy to integrate a web store
- Multiple payment methods
- Barcode Label Generation
- Touch screen ready.
- Independent Multi-Store Inventories
- Know what's in stock, Inventory Monitoring & Replenishment
- Controlled Return/Exchange processing
- Charge and Layaway Accounts
- Drill down from the transaction screen
- In/Out product tracking for staff
- Invoices can be paid with more than one method of payment
- Enter referrals for advertisement tracking





## Web-based Software Solutions

Cloud or Server-based platforms

### EDI Fulfillment

Need to expand your business and sell to major retailers like Walmart®, Loblaw's® or Home Depot®, Canadian Tire® or Target® then you'll need EDI (Electronic Data Interchange) processing capabilities.

RSA provides complete integrated EDI order, invoice and payment processing as well as partnering with *Comport Communications International's* data network to provide you with a one-stop source for all your EDI requirements.

We support most EDI documents, here are some examples are listed below.

#### SEND

- 810 Invoice (VICS)
- 880 Invoice (UCS)
- 856 Advanced Shipping Notice
- 882 Summary Invoice (UCS)
- 997 Functional Acknowledgement

#### RECEIVE

- 820 Remittance Advice
- 824 Application Advice
- 830 Planning Schedule with Release Capability
- 850 Purchase Order (VICS)
- 852 Inventory Stock Status
- 864 Invoice Text Messages
- 875 Purchase Order (UCS)
- 997 Functional Acknowledgement

#### EDI DOCUMENTS

- 810 – Detail Invoice (line item detail)
- 812 – Debit Credit Adjustment
- 820 – Remittance Advice
- 850 – Purchase Order
- 856 – Advance Shipment Notice
- 882 – DSD Summary Invoice



## Web-based Software Solutions

Cloud or Server-based platforms

### Projects/Job Costing

The Project/Job Costing module provides an effective solution for project managers in construction, job service and other professional industries, allowing them to monitor and control revenue, costs and project status.

- Assign unlimited cost categories to each project and automatically calculate cost and revenue estimates per cost category.
- Assign as many as eight progress status categories to each contract and project. Choose from estimate, approved, active, inactive, in process, cancelled, on hold, completed.
- Close a project to revenue and/or costs at any time.
- Enter costing entries directly to projects or from the originating voucher in the Payable, Receivable or Invoicing modules
- Enter direct costing entries specifying the quantity (e.g., hours), unit cost or billing rate (for time-and-materials projects) for each staff member, material (inventory item), subcontractor, equipment, miscellaneous item, and overhead expense allocated to the project.
- Review the status of each of the project, profitability, and estimate-to-actual comparisons.
- Post or modify entries to projects even after originating voucher has been created.
- Search for project entries by originating module, voucher number or GL account number.

#### Additional Features

- Multi currency expense and revenue per project
- Unlimited project types (time and materials, cost plus, fixed contract, etc)
- Unlimited costing categories
- Search project by type and status
- Assign each category to one of six cost types (labor, material, equipment, miscellaneous, overhead, and subcontractor)
- Drill down to the originating transactions



## Web-based Software Solutions

Cloud or Server-based platforms

### Warehousing Management



The Warehousing module provides a complete integrated solution for managing your entire inventory and reporting requirements. Through the use of wireless handheld devices and paperless order picking, real-time inventory becomes a reality. User-defined Order processing stages include Release orders to be picked, Assign picker, Inspection Process, Assign shipment tracking info and Invoice creation.

- Manage multiple warehouses and bin locations.
- Handle regular stock, special order items, lot numbers, lot + expiration, serial & kits.
- Inter warehouse transfers (Prepare shipment/receiving documents)
- 4 barcodes per product (Barcode, UPC, inner pack and pallet)
- At the customer level, individualized SKU and UPC barcodes.
- Purchase products in one unit of measure (case) and sell by another (each), with each level having its own cost.
- Products grouped by department and classification.
- All products have Tariff numbers and country of origin.
- Stock counts and pricing up to 6 decimal places.
- Customer based pricing, with discount \$, discount %, fixed price, time limited discounts. Individual price lists can be maintained by customer.
- Product specifications (text box), case units, inner pack, pallet, cube, net weight, gross weight, format, stacking & shelf days.
- Track stock movement by warehouse, bin location, lot, expiration and serial number.
- Ability to track shipments to perform product recall.
- Restructure warehouse pallets and labeling by pallet.
- Receive orders by container or individual purchase order.
- Customer preferences on packing slip printing and back-order handling.
- Use handheld devices for Picking, Put-aways and Stock movements, with Guided Picks and Put-aways. Lot# and boxing info entered at the time of picking, with productivity analysis by picker.
- Print receiving worksheet / checklist and inventory labels on receiving.
- Print Bill of Lading, ASN and UUC128 Labels.



## Web-based Software Solutions

Cloud or Server-based platforms

### Service Billing

The Service Billing module allows automatic invoicing, according to a your predetermined billing cycles. This module is useful for businesses that manage long-term rentals, subscriptions, service providers and renewals. It also allows you to created Job Estimates, which can be converted in a Job/Order and then invoiced, without any data re-entry.

- Create user-defined billing cycles (Weekly, Semi-monthly, Monthly, Quarterly, Semi-annually, Annually, etc) that allows you to decide how many times per year a customer gets billed. Current order and Invoice automatically gets updated with new term of service dates.
- Create estimates with material, labor and profit calculations. With optional Job/project module you can track a breakdown of estimated costs versus actual costs; the job costing report gives you detailed rundown on materials, labor, outside services, and miscellaneous costs as they relate to each job. Easily review which jobs and estimators are making you money.
- Create billings for service resellers, displaying service address location and calculating pricing and discounts by customer, product group or individual product.
- Load user selected billing cycle into the billing batch. Changes made will be added to current invoice as well as future orders.
- Multiple pricing update can be done based on type of service, current cost and new fee schedule.
- Invoices emailed or printed in batch run, as determined by customer preference and language.
- Print invoice batch report for approval prior to creating invoices and create invoices in advance with user determined billing date.
- Allows for multiple ways to handle job billing, whether you do partial billing, billing upon completion, collect a percentage or dollar amount up front. Creates a separate invoice (related back to the original order) for each billing phase.
- All your important documents such as contracts can be scanned and attached to your customer's Account. No longer have to spend half-a-day looking for that piece of paper to know how much to bill.
- Gives you the flexibility to meet the diverse billing combinations and calculates invoices accurately according to your business rules (multiple currencies, sales taxes and payment terms).
- Batch import of cash receipts for customers that pay with direct deposit.
- Add NSF charge to accounts when posting returned payments.
- Route management for scheduled maintenance, with routing priority.
- Save time and minimize data entry, thanks to complete integration with the Accounts Receivable and General ledger, which is updated automatically with each billing cycle.